

MINISTRY OF REGIONAL DEVELOPMENT
National Coordination Authority

Competence Centre on Microeconomic Evaluation

Policy evaluation in practice

Enkelejda Havari
European Commission, Joint Research Centre
Directorate I - Competences
Competence Centre on Microeconomic Evaluation

3.10.2018, MMR, Prague

The European Commission's science and knowledge service

Joint Research Centre

Competence Centre on Microeconomic Evaluation: Policy evaluation in practice

Enkelejda Havari

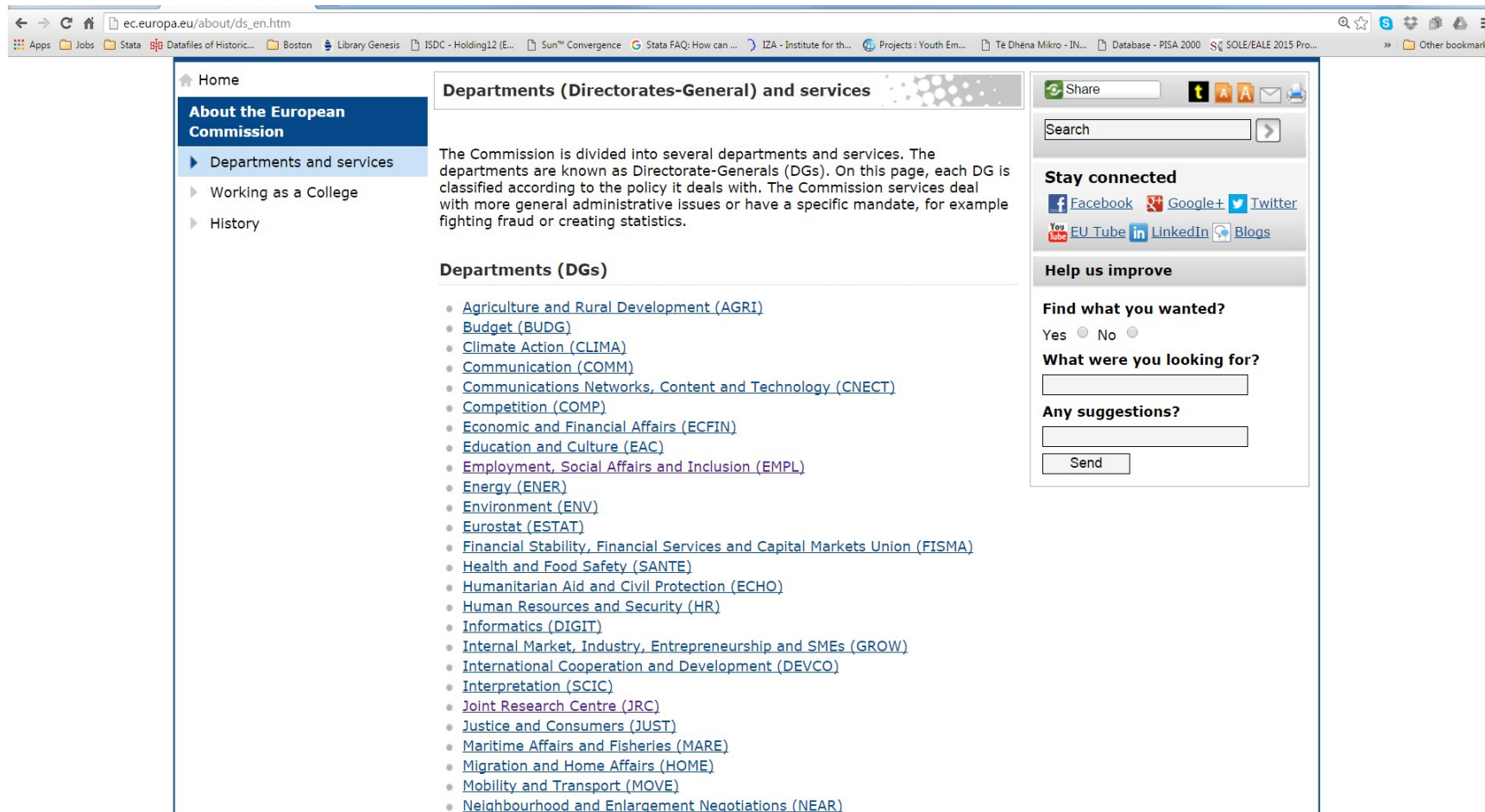
Directorate I – Competences
Competence Centre on Microeconomic Evaluation



Presentation Outline

1. DG Joint Research Centre (JRC)
2. Centre for Research on Impact Evaluation (CRIE)
3. Activities of the Competence Centre on Microeconomic Evaluation (CC-ME)
4. Use of administrative data for policy

European Commission: DG Joint Research Centre



The screenshot shows the European Commission website at ec.europa.eu/about/ds_en.htm. The page is titled "Departments (Directorates-General) and services". It features a sidebar with navigation links: "Home", "About the European Commission", "Departments and services", "Working as a College", and "History". The main content area explains that the Commission is divided into several departments and services, known as Directorates-General (DGs). It lists 28 DGs, including Agriculture and Rural Development (AGRI), Budget (BUDG), Climate Action (CLIMA), Communication (COMM), Communications Networks, Content and Technology (CNECT), Competition (COMP), Economic and Financial Affairs (ECFIN), Education and Culture (EAC), Employment, Social Affairs and Inclusion (EMPL), Energy (ENER), Environment (ENV), Eurostat (ESTAT), Financial Stability, Financial Services and Capital Markets Union (FISMA), Health and Food Safety (SANTE), Humanitarian Aid and Civil Protection (ECHO), Human Resources and Security (HR), Informatics (DIGIT), Internal Market, Industry, Entrepreneurship and SMEs (GROW), International Cooperation and Development (DEVCO), Interpretation (SCIC), Joint Research Centre (JRC), Justice and Consumers (JUST), Maritime Affairs and Fisheries (MARE), Migration and Home Affairs (HOME), Mobility and Transport (MOVE), and Neighbourhood and Enlargement Negotiations (NEAR). The JRC is highlighted in purple. On the right side, there is a "Share" button, a search bar, and social media links for Facebook, Google+, Twitter, EU Tube, LinkedIn, and Blogs. There is also a "Help us improve" section with a "Find what you wanted?" poll and a "What were you looking for?" search bar.

Home

About the European Commission

Departments and services

Working as a College

History

Departments (Directorates-General) and services

The Commission is divided into several departments and services. The departments are known as Directorate-Generals (DGs). On this page, each DG is classified according to the policy it deals with. The Commission services deal with more general administrative issues or have a specific mandate, for example fighting fraud or creating statistics.

Departments (DGs)

- [Agriculture and Rural Development \(AGRI\)](#)
- [Budget \(BUDG\)](#)
- [Climate Action \(CLIMA\)](#)
- [Communication \(COMM\)](#)
- [Communications Networks, Content and Technology \(CNECT\)](#)
- [Competition \(COMP\)](#)
- [Economic and Financial Affairs \(ECFIN\)](#)
- [Education and Culture \(EAC\)](#)
- [Employment, Social Affairs and Inclusion \(EMPL\)](#)
- [Energy \(ENER\)](#)
- [Environment \(ENV\)](#)
- [Eurostat \(ESTAT\)](#)
- [Financial Stability, Financial Services and Capital Markets Union \(FISMA\)](#)
- [Health and Food Safety \(SANTE\)](#)
- [Humanitarian Aid and Civil Protection \(ECHO\)](#)
- [Human Resources and Security \(HR\)](#)
- [Informatics \(DIGIT\)](#)
- [Internal Market, Industry, Entrepreneurship and SMEs \(GROW\)](#)
- [International Cooperation and Development \(DEVCO\)](#)
- [Interpretation \(SCIC\)](#)
- [Joint Research Centre \(JRC\)](#)
- [Justice and Consumers \(JUST\)](#)
- [Maritime Affairs and Fisheries \(MARE\)](#)
- [Migration and Home Affairs \(HOME\)](#)
- [Mobility and Transport \(MOVE\)](#)
- [Neighbourhood and Enlargement Negotiations \(NEAR\)](#)

Share

Search

Stay connected

[Facebook](#) [Google+](#) [Twitter](#)

[EU Tube](#) [LinkedIn](#) [Blogs](#)

Help us improve

Find what you wanted?

Yes ☐ No ☐

What were you looking for?

Any suggestions?

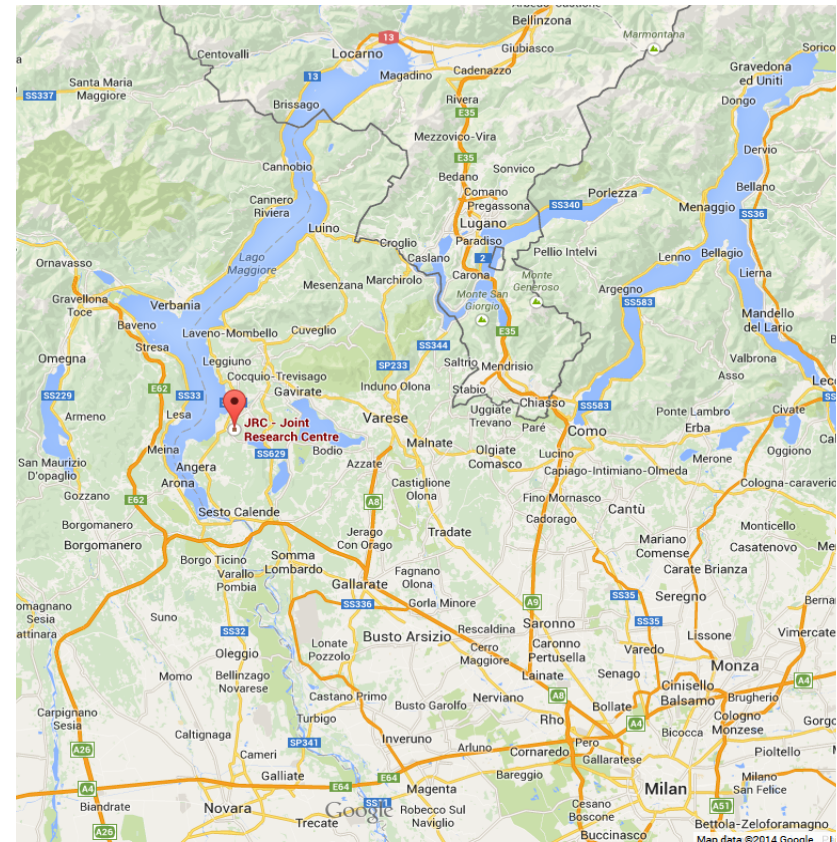
Joint Research Centre (JRC)

- The JRC is the Commission's in-house science service.
- **Mission:** provide EU policies with independent, evidence-based scientific and technical support throughout the whole policy cycle.
- The JRC **works with policy DGs**, develops methods, tools and standards, and shares its know-how with the Member States, the scientific community and international partners.
- The 7 scientific institutes of the JRC are located on 5 sites in **Belgium** (Brussels, Geel), **Germany** (Karlsruhe), **Italy** (Ispra), the **Netherlands** (Petten) and **Spain** (Seville).
- Website: <https://ec.europa.eu/jrc/>



JRC – Ispra (Italy)

- JRC
- Ispra site, Varese, Italy
- Competence Centre on Microeconomic Evaluation (CC-ME)
- url: <http://crie.jrc.ec.europa.eu>
- email: crie@jrc.ec.europa.eu



First steps towards counterfactual impact evaluation...



The Centre for Research on Impact Evaluation (CRIE)

- CRIE is an initiative of the: Joint Research Centre (DG JRC) and Directorate General Employment, Social Affairs and Inclusion (DG EMPL)
- It was launched in **June 2013** to support Member States (MS) and DG EMPL for carrying out **Counterfactual Impact Evaluations (CIE)** of European Social Fund (ESF) interventions.
- The ESF is one of the **main financial instruments** for promoting employment and social inclusion in Europe.

What is Counterfactual Impact Evaluation?

- In a nutshell, **Counterfactual Impact Evaluation (CIE)** is a methodological approach that allows to compare the outcome of interest of units having benefitted from a programme (the “**treated group**”) with other units similar in many respects (the “**comparison/control group**”), except for participation in the programme.
- The comparison group helps addressing the question: *“what would have happened to the treated had they not participated to the programme?”*, known as the **counterfactual**.
- The main idea is to find the “*best counterfactual*” using a combination of:

Data on beneficiaries and non-beneficiaries

+

methodology

Why do we need Counterfactual Impact Evaluation?

- Public Authorities need to collect evidence and determine whether policy objectives have been met.
The ultimate goal of the evaluation is to assess whether the resources were used efficiently.
- *CIE is a tool that allows to establish a causal link between policies and their effects, relying on data availability both for beneficiaries and non beneficiaries of a policy programme.*
- The European Commission is committed to making impact evaluation part of the Policy Cycle.

Why CRIE?

Difficult economic times

Broad EU agenda of evidence-based policy making

- to improve quality and effectiveness of public policies
- to promote accountability

2014-2020 programming period:

- common and ESF-specific provisions involve a shift toward impact evaluation culture

“A shift towards impact evaluation”

CRIE work programme overview

Support Member States for carrying out Counterfactual Impact Evaluations (CIE) of DG EMPL funded interventions:

- Data fitness initiative for CIE – **a call for data!**
- Capacity building:
 - **Trainings** on CIE to MS
 - **Regional Workshops** on CIE
 - **Community of Practice** meetings
 - **COMPIE conference (2014, 2016, 2018)**
 - **Videos and e-learning material** (CRIE website, Yammer community)

Data Fitness Initiative for CIE

Launched in 2016

- **Promotion of the use of CIE for the assessment of ESF-funded interventions**
- **Selection of a suitable ESF intervention to conduct a CIE**
- **Collaboration between CRIE and Managing Authorities (MAs) on evaluations foreseen in their Evaluation Plan.**



Data Fitness Initiative for CIE

Two-type support to ESF Managing Authorities (MA):

1. 'data-ready' : carry out the evaluation if data are in the right format
2. 'data-future' : support the MAs in the process of collecting data to perform an evaluation at a later stage

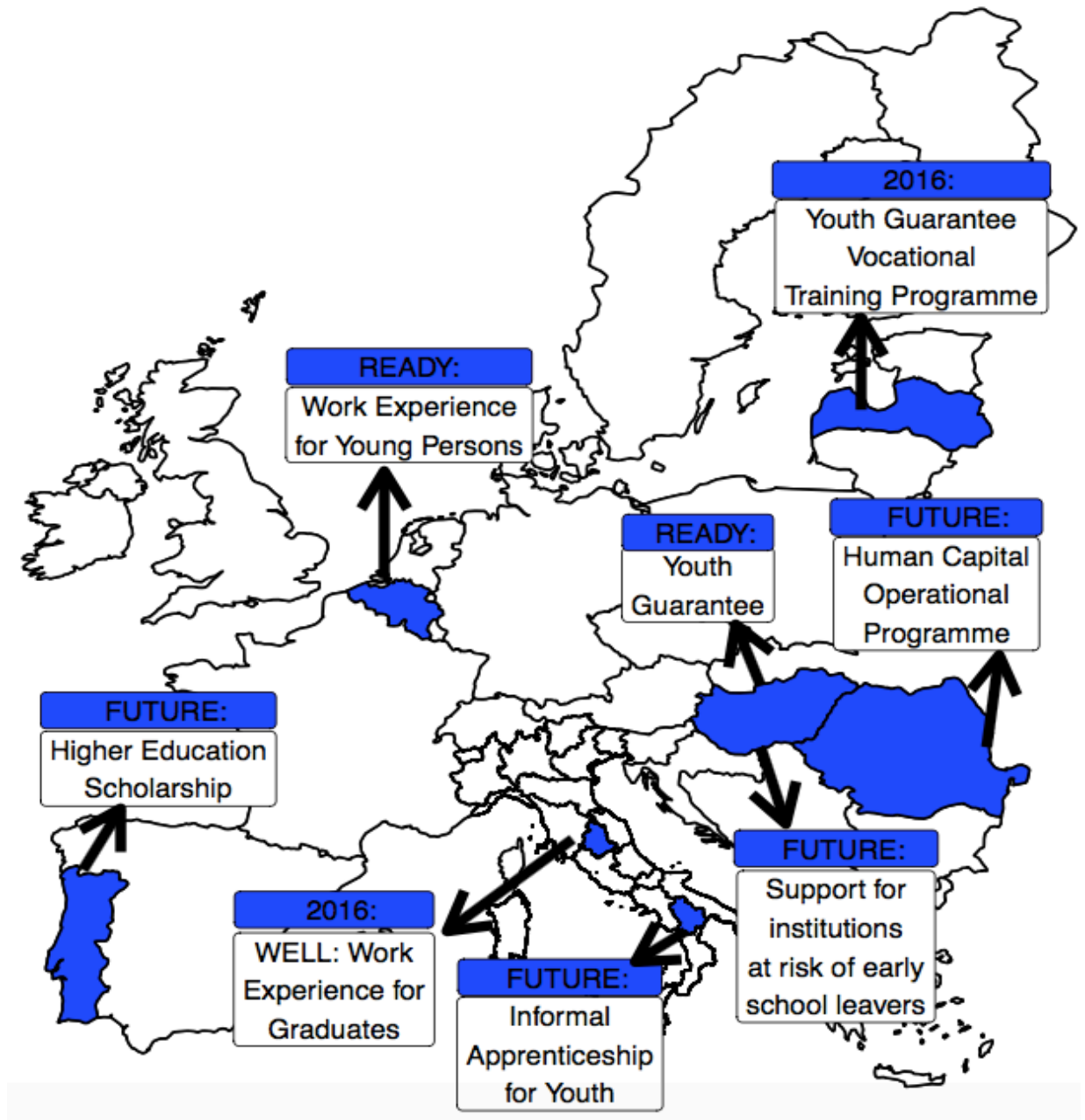
- ESF MAs are invited to provide CRIE with the data needed to carry out a well-designed **CIE** of a specific ESF funded intervention

- ESF MAs will be guided by CRIE through the year in the **data collection and/or data linkage** procedures to be ready for a CIE study

Suggestions for any CIE evaluation of ESF or Youth Guarantee funded programmes in the Czech Republic?

Contact us 😊

Data Fitness Initiative for CIE 2016–2017



DATA READY projects

2016

- **WELL Work Experience for Graduates** (On-the-job training for graduates; incentive to firms and host organizations), **Italy**
- **Youth Guarantee Vocational Training Programme**, **Latvia**

2017

Youth Guarantee Scheme (Training programmes and wage subsidies), **Hungary**
Work for Youth (Labour market services), **Belgium**

2018

JobsPlus Incentive Scheme (Training programmes and wage subsidies), **Ireland**

Evaluation projects with Member States

Challenges

ESF Managing Authorities in charge of evaluation act as intermediary between CRIE researchers and data holder institutions

Data: Issues

- Access and linkage: data regarding (i) treated units (monitoring data), (ii) control units, and (iii) outcomes of interest may be collected by different data holders
- Use: all data holders need to agree on granting access to their data and to understand the need of specific information for evaluation purposes
- Snapshot versus continuous observations: in some Member States there is still room for improving access to data for evaluation
- Merge: data on intervention activities and unemployment/employment spells coming from different data holders may show inconsistencies

Evaluation projects with Member States

The way forward

Enabling provision to use administrative registers

Proposal for the draft Regulation on ESF+

- released by the European Commission on 30 May 2018
- modifiable by European Parliament and Council

Article 15: Indicators and reporting

5. Member States shall, when data are available in registers or equivalent sources, enable the Managing Authorities and other bodies entrusted with data collection necessary for the monitoring and the evaluation of the general support of the ESF+ strand under shared management to obtain those data from data registers or equivalent sources, in accordance with points (c) and (e) of Article 6(1) of Regulation (EU) 2016/679

2014 Training on CIE

- **Two days** training: CIE methods and group exercises

Member States:

- Poland, Spain, Hungary, Czech Republic, Bulgaria, Estonia, Slovakia, Latvia, Lithuania

2015 Regional Workshops on CIE

Three days workshop : sessions

- theoretical knowledge on CIE
- computer based training on CIE using the software Stata
- team work with the creation of a concrete evaluation plan
- presentations of finalized/ongoing CIE studies by experts in the field of CIE

1 - **North-Western RWC**: Brussels - BE, IE, NL

2 - **Eastern Central RWC**: Budapest - BG, HR, CZ, HU, SK, SE, RO

3 - **Nordic RWC**: Tallinn - EE, SE, LV, LT, PL

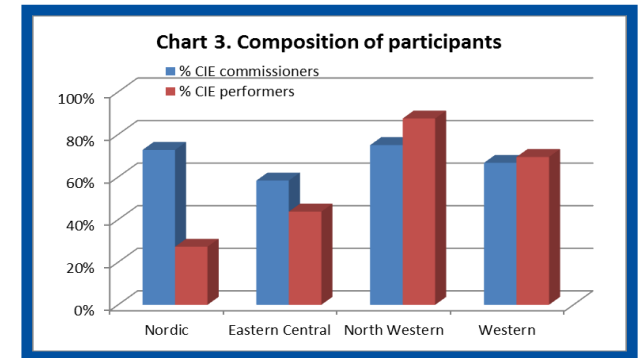
4 - **Western RWC**: Dublin - IE, DE, FR, ES, PT

2015 Regional Workshops on CIE

1 - North-Western RWC: 13-14 April 2015, Brussels

Participating countries: BE, IE, NL, 13 participants

CRIE Trainers: Andrea Morescalchi, Sylke V. Schnepf



2 - Eastern Central RWC: 22-24 Sept. 2015, Budapest

Participating countries: BG, HR, CZ, HU, SK, SE, RO, 78 participants

CRIE Trainers: Enkelejda Havari, Paolo Paruolo

Experts: Gabor Kezdi and Martin Kahanec

(Central European University),

Joost de Laat, Celine Ferré (WB)



2015 Regional Workshops on CIE

3 - Nordic RWC: 13-15 October 2015, Tallinn

Participating countries: EE, SE, LV, LT, PL, 14 participants

CRIE Trainers: Paolo Paruolo, Leandro Elia

Experts: Mihails Hazans (IZA, University of Latvia)

Céline Ferré (WB)



4 - Western RWC: 28-30 October 2015, Dublin

- *Participating countries:* IE, DE, FR, ES, PT, 58 participants
- *CRIE Trainers:* Béatrice d'Hombres, Giulia Santangelo
- *Experts:* Pedro Martins (Queen Mary, University of London), Enrico Rettore
- (Research Institute for the Evaluation of Public Policies and Trento University)



COMPIE conference



The European Commission, Directorate-General Joint Research Centre (DG JRC)
in collaboration with
Humboldt-Universität zu Berlin
and
RWI - Leibniz Institute for Economic Research
are happy to announce the conference

COMPIE 2018

COunterfactual MMethods
for PPolicy IImpact EEvaluation

26 -28 September, 2018
Humboldt-Universität zu Berlin

Keynote Speakers:
Joshua ANGRIST, MIT
Jesse ROTHSTEIN, University of California, Berkeley



Registration and info at: <https://ec.europa.eu>



The aim of the conference is to **bring together policy makers and researchers** to discuss developments in counterfactual methods and applications of impact evaluation.

The latter can cover a broad range of interventions, from labor and social policy to regulation and funding programmes, ideally with a focus on EU policies.

COMPIE conference

26-28 September 2018, Humboldt-Universität zu Berlin, Berlin

- Keynote speakers: **Joshua Angrist (MIT)** and **Jesse Rothstein (UC Berkeley)**
- Round table “Social dividends of counterfactual impact evaluation in the EU: present, past and future”

Past COMPIE conferences

20-21 October 2016, Catholic University, Milan

- Keynote speakers: **Michael Lechner (University of St. Gallen)** and **Jeffrey Andrew Smith (University of Michigan)**
- Round table “Policy Making with Administrative data: is there a EU dimension?”

27-28 November 2014, Rome

- Keynote speakers: **Jochen Kluve (Humboldt-Universität Berlin)** and **Steve Pischke (London School of Economics)**

Our platform on Yammer: Counterfactual Impact Evaluation Network CIE-NET

The screenshot displays the Yammer interface for the 'All Network' group, 'COUNTERFACTUAL IMPACT EVALUATION NETWORK (CIE-NET)'. The left sidebar contains navigation icons (home, mail, notifications) and a search bar. Below these are links to 'Learning', 'Community of Practice - ESF MAs', 'Conferences', 'Data Fitness - ESF MAs', and 'All Network' (which is highlighted). The main content area shows a post by Corinna Ghirelli, dated March 1 at 3:46pm. The post text reads: 'Here is a very interesting article from The Economist that argues very clearly why counterfactual impact evaluation methods should be used by policymakers. Enjoy your reading!'. Below the text is a link to an article titled 'In praise of human guinea pigs _ The Economist' with a sub-headline 'Doctors use evidence when prescribing treatments. Policymakers should, too.' and a thumbnail image. The post has received two likes from 'Enkelejda Havari' and 'Giulia Santangelo'. Below the post is a reply by Giulia Santangelo, dated March 1 at 3:50pm, stating 'Very interesting reading indeed!'. The right sidebar shows 'MEMBERS (38)' with a row of profile pictures, a 'SEARCH' bar with the placeholder 'Search this group', an 'INFO' section with a link 'Click here to edit this section.', and a 'NETWORK RESOURCES' section with an 'Add' link and a folder icon. A note below the folder icon states: 'Corinna Ghirelli, as a network admin, you can add files and links here to make them easily accessible to your entire network.'

**The European Commission is investing more in
causal evidenced based policy...**



Competence Centre on Microeconomic Evaluation

The centre was launched in May 2016 to support the evaluation programmes of the European Commission.

It builds on the experience of the Centre for Research on Impact Evaluation (CRIE), but covering other economic areas such as: education, migration, regulatory policies, innovation, growth, etc.

CRIE is till an integral part of the CC-ME and focuses on evaluation in the area of employment.



*Paolo Paruolo
(CC-ME Project Leader)*



*Sven Langedijk
(Head of Unit)*

Visit us online at: <https://ec.europa.eu/jrc/en/microeconomic-evaluation>
or contact us at: ec-cc-me@ec.europa.eu



People @ CC-ME 2016/18



Massimiliano Bratti



Giulia Canzian



Maurizio Conti



Nuno Crato



Claudio Deiana



Montezuma Dumangane



Leandro Elia



Antonella Ferrara



Massimiliano Ferraresi



Sophie Guthmuller



Enkelejda Havari



Gábor Kátay



Athanasios Lapatinas



Gianluca Mazzarella



Elena Meroni



Palma Mosberg



Mattia Olivi



Giulia Santangelo



Sylke Schnepf



Stefano Verzillo



Mission

To enhance EU policies through data-driven microeconomic analysis and to provide causal evidence on what policies work.

Services

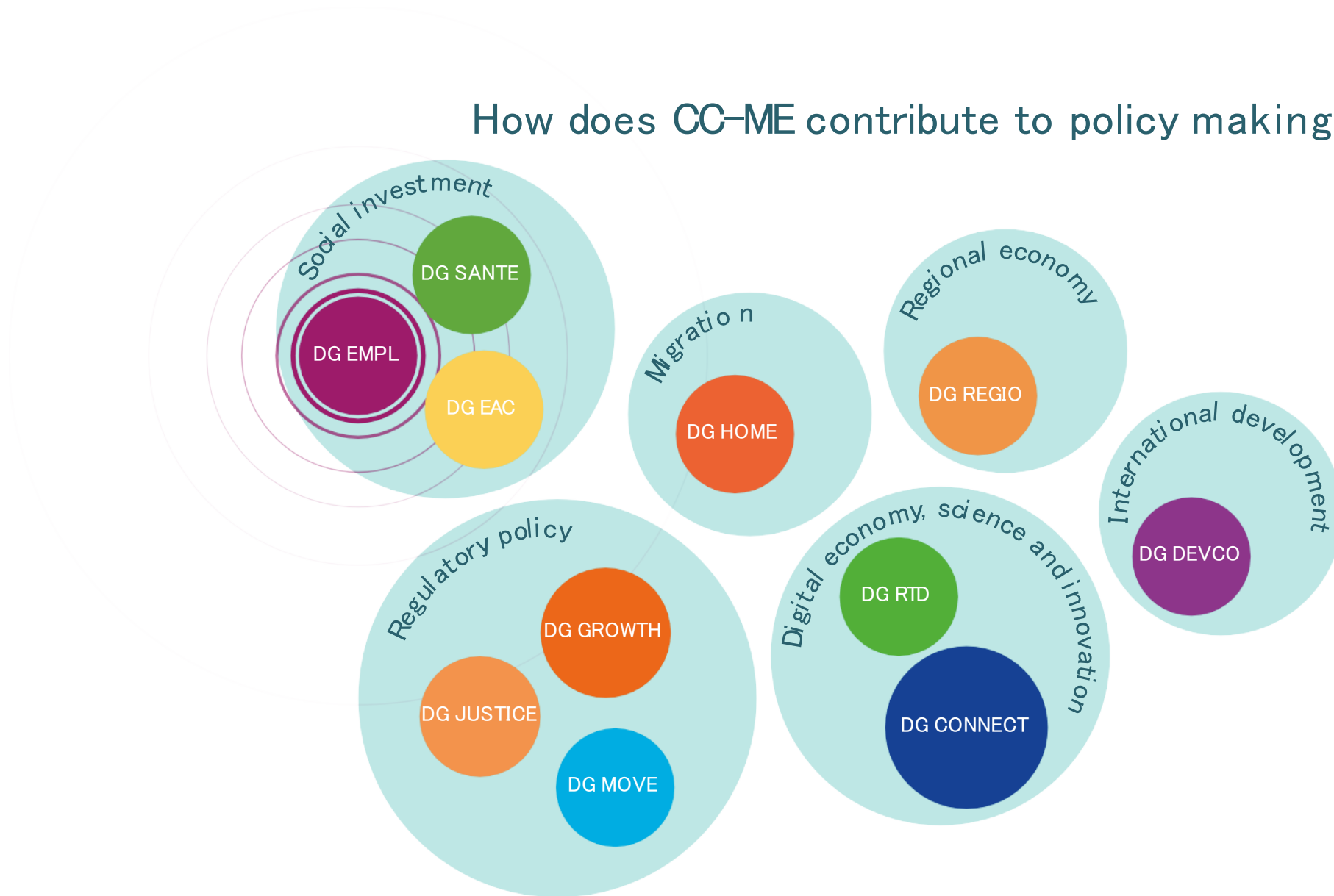
Counterfactual Impact Evaluations as well as advice and capacity building on data collection, evaluation design and methodology.

Focus

Quantitative evaluations of EU policies contributing to the Better Regulation Agenda, the European Semester and the EU Spending Programmes.



How does CC-ME contribute to policy making?



Counterfactual impact evaluation studies using administrative data

- **Spending programmes**
 - Evaluation of **labour market** policies (European Social Fund, Youth Guarantee) – in collaboration with DG EMPL
 - Assessing the impact of the **FP7 programmes** on firms' outcomes – in collaboration with DG RTD
 - **Migration policies** and the current refugees crisis
- **Regulatory policies**
 - The impact of the Late Payment Directive (LPD) implementation on business performance
 - Effectiveness of Country Specific Recommendations (CSRs)
- **Administrative data (labs)**
 - New Zealand
 - CBS Netherlands



Spending programmes: Labour market policies



DG EMPL (Data fitness initiative 2016)

What worked with the Work Experience for Graduates initiative in Umbria (Italy)

WHY

The goal of the project is to evaluate the impact of an European Social Fund intervention, the 'Work Experience for Graduates' implemented in Umbria (Italy).

WHEN

The project ended in December 2016

WITH WHOM

The Umbria regional authorities

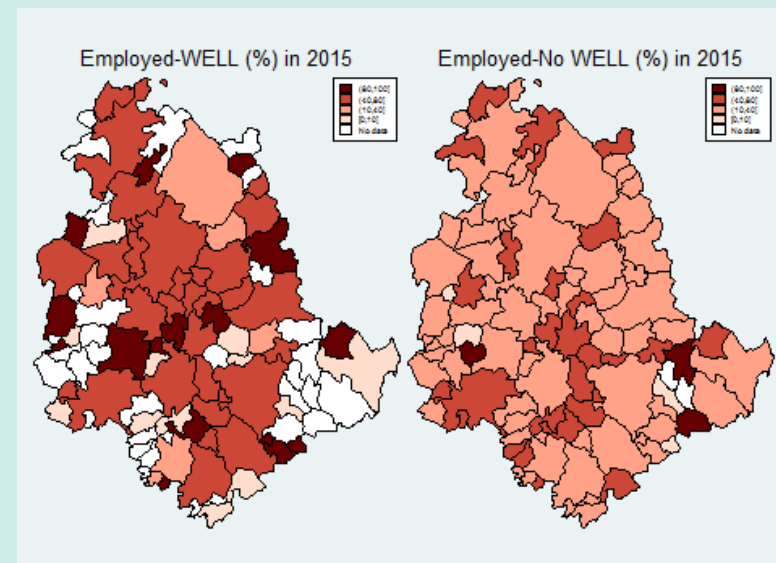
FINDINGS

The programme:

- targeted unemployed graduates;
- consisted in, first, on-the-job training, and, second, wage subsidies to firm and organizations that finally hired the trainees.
- was implemented between April 2013 and September 2014.

The analysis carried out with Propensity Score

Matching indicates that the participants are more likely to be employed. However, the positive effect is measured only for participants who found a job within the region boundaries.



Employment rate of WELL participants and non-participants, at the municipality level

DG EMPL (Data fitness initiative 2016)

What worked in the implementation of Youth Guarantee in Latvia

WHY

The goal of the project is to evaluate the impact of a Youth Guarantee intervention implemented in Latvia. This is one of the first counterfactual impact evaluation on Youth Guarantee in Europe.

WHEN

Ongoing project until September 2017

WITH WHOM

The Latvian European Social Fund managing authority

FINDINGS

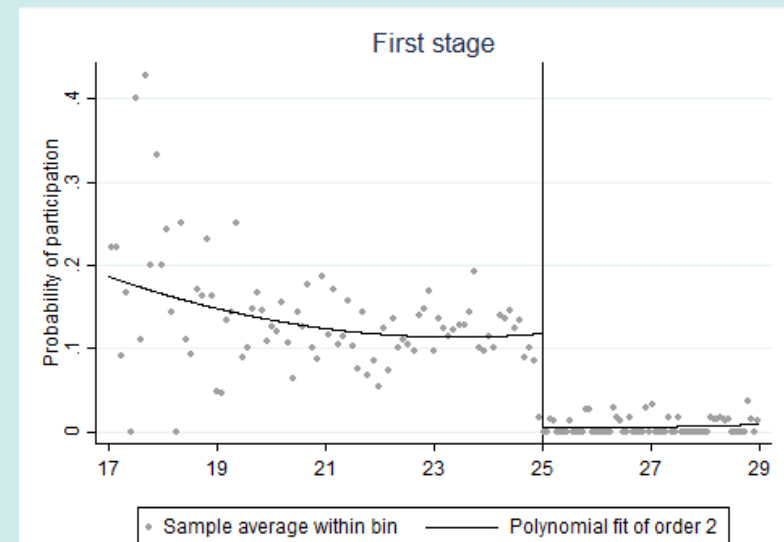
The intervention :

- targeted young NEETs (Not in Education, Employment or Training) aged 15-29 years;
- consisted in vocational training courses offered to participants
- the evaluation refers to the period January 2014 - December 2015.

Fuzzy Regression Discontinuity Design method using a priority rule for those aged 15-24.

The rule was effective in increasing participation.

Though, participation did not increase the employability and the income of the participants.



Age measured on registration date at PES

Migration and the current refugees crisis

DG Migration and Home affairs (HOME)

Guidance document for the evaluation of the Asylum, Migration and Integration Fund (AMIF) and Internal Security Fund (ISF)

WHY

The goal of the project was to harmonize the evaluation of the AMIF and the ISF funds across European member states. CC-ME prepared a guidance document containing information on the indicators and the methodology to be used by the European countries when evaluating the impact of the funds in the society..

WHEN

Project completed April 2017

WITH WHOM

Directorate-General Migration and Home Affairs (DG HOME)

FINDINGS

Guidance document on the evaluation of the AMIF and ISF funds delivered on February 2017



Refugees and voting behaviour

WHY

The goal of the study is to offer evidence on what are the political consequences of increased refugees exposure and how does it affect voting behaviour

WHEN

Ongoing project

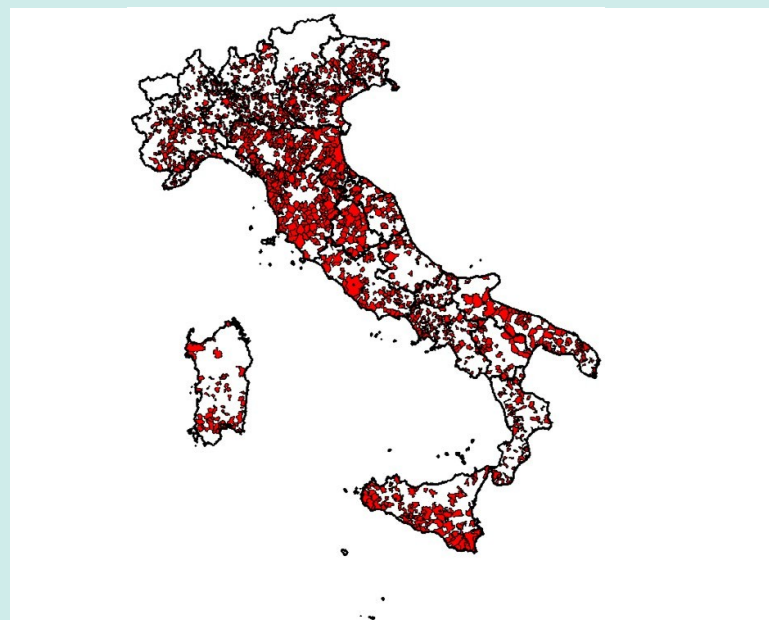
WITH WHOM

JRC.CC-ME Internal project

FINDINGS

- Italy has seen in the past two years an unprecedented inflow of refugees reaching its coasts.
- The refugees are hosted in reception centres displaced across Italian municipalities
- The study shows how being 'close' to refugees centres can have an impact on voting behaviours of the natives
- Using results from the recent Italian referendum (2016) we find that being close to a municipalities hosting one of these centres:

- Increased voting turnout
- Increased the share of No Votes in the Italian referendum which can be interpreted as an increase in anti-government votes.



Refugees centres in Italy as of 2016

**Winner of the Tarantelli prize 2018 Italian
Association of Labour Economists**

Spending programmes: The impact of FP7 on firms performance



DG RTD

What worked in the disbursement of Research grants

- This project evaluates the impact of the programmes FP7 on firms outcomes.
- **Performance measures:** number of patents, number of trademarks, labor productivity growth, sales growth, employment growth
- **Three databases:** FP7 Corda (grants), Orbis (firm data), PATSTAT (patent data)
- **Two methods:** Regression Discontinuity Design (RDD) and Dose Response Function (DRF)



DG RTD

What worked in the disbursement of Research grants

- First rigorous evaluation of the impact of EU research grants on firms' performance
- Information of *non-successful applicants* and the score obtained for the project allows more precise estimation than most similar studies
- Broad target group: 46 countries (including Old- and New Member States, Candidate, Associate and Tiers countries), small/big firms,...
- We can assess EC's "systematic choices"
... and (later) *heterogeneous responses to the grant*
- **(Preliminary) results** show that FP grants have a positive impact on firms' post-treatment productivity

Regulatory measures: European Directives, Country Specific Recommendations



DG GROW

What worked in the implementation of the Late Payment Directive

WHY

The evaluation focuses on the impact of the Late Payment Directive (LPD) implementation on business performance, notably on firms exit rate

WHEN

Completed December 2017

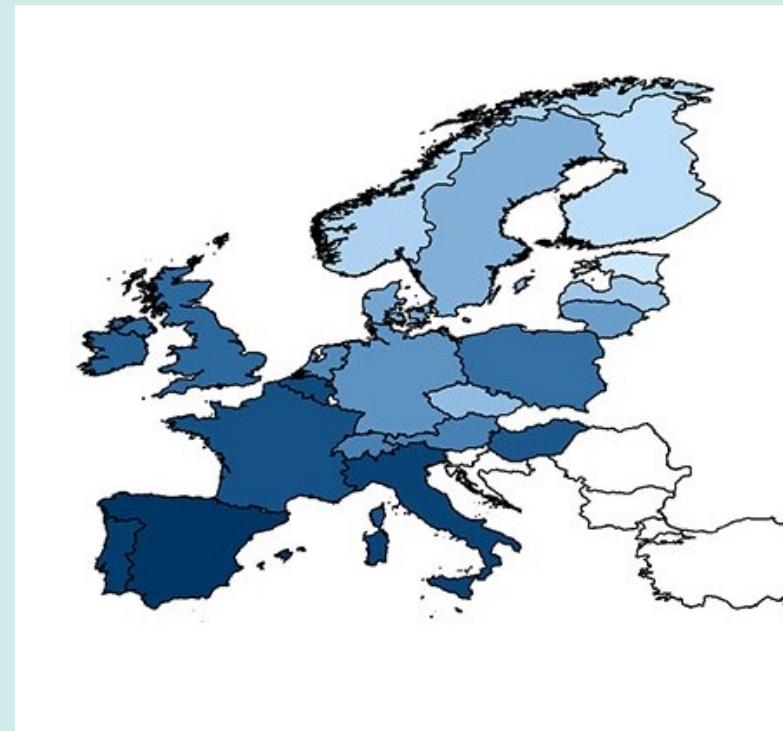
WITH WHOM

Directorate-General Internal Market, Industry, Entrepreneurship and SMEs (DG GROW), and the European Commission Secretariat-General (SEC GEN)

FINDINGS

The counterfactual impact evaluation has focused on the case of payments from the Public Administrations to economic operators (PA2B), for the period 2008-2014.

The analysis showed that the implementation of the LPD significantly reduced firms' exit rate, and that the effect is stronger for the member states that showed longer average payment period before the adoption of the LPD.



*European countries by average payment length
The darker the blue, the greater the average payment duration.*

DG GROW

Effectiveness of Country Specific Recommendations (CSRs)

WHY

The study aims at evaluating the yearly and multi-annual progresses in the implementation of Country-specific Recommendations (CSR) issued since 2011. Moreover, the determinants of the degree of implementation are analyzed.

WHEN

Completed April 2018

WITH WHOM

Directorate-General Internal Market, Industry, Entrepreneurship and SMEs (DG GROW), and the European Commission Secretariat- General (SEC GEN)



DG MOVE

What worked in the implementation of the Airport Charges Directive

WHY

The evaluation focuses on the impact of the Airport Charges Directive on the level of Airport Charges

WHEN

Completed June 2018

WITH WHOM

Directorate-General Mobility and Transport (DG MOVE) and the European Commission Secretariat- General (SEC GEN)

FINDINGS

The analysis showed that the implementation of the ACD reduced the level of charges and that the effect is more pronounced one year after its adoption.



Administrative Data for policy evaluation: the way forward

Use of administrative data (CC-ME book)

Data-Driven Policy Impact Evaluation

Crato, Paruolo (2019) Springer

How Access to Microdata is Transforming Policy Design

In the light of better and more detailed administrative databases, the book provides statistical tools for evaluating the effects of public policies advocated by governments and public institutions.

Topics include data confidentiality, data linkage, and national practices in policy areas such as public health, education and employment.

Open access under a CC BY 4.0 license

Available at

<https://www.springer.com/it/book/9783319784601>



CC–ME studies and projects using admin data

Collaboration with New Zealand: demonstrating the power of admin data

WHY

The project aims at carrying out demonstration projects to show how administrative data can be used to demonstrate the impact of social investment.

WHEN

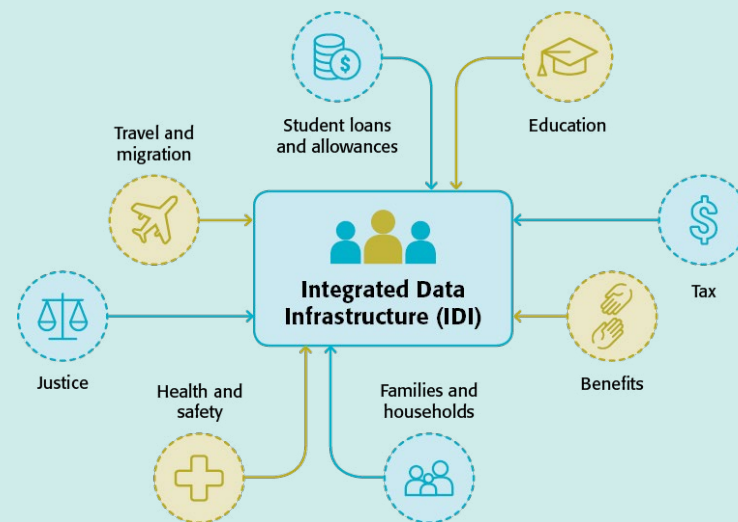
The project started in March 2017.

WITH WHOM

The New Zealand Office of the Prime Minister Chief Scientific Advisor and Statistics New Zealand.

Three projects will be carried out, namely:

- The effect of education on crime behavior
- The effects of involuntary job loss on adult and child outcomes
- The effect of the 2011 Christchurch earthquake on school and health outcomes.



Source: Statistics New Zealand website

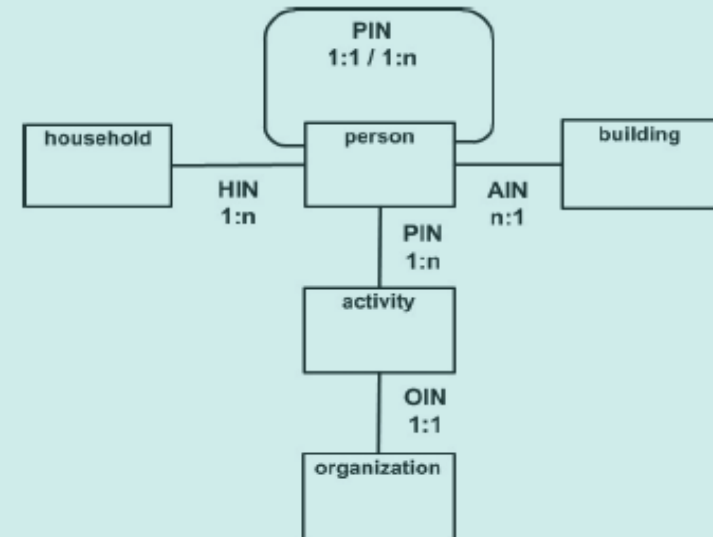
Collaboration with **Statistics Netherlands (CBS)**

System of interlinked and standardised registers and surveys

The Dutch Population Register (PR) contains **personal identifiers** and demographic information for **every registered inhabitant in the Netherlands**

This allows matching persons to households, buildings and organisations (firms, schools, etc.)

Studies of regional phenomena and small sub-groups as well as longitudinal studies and small domain statistics are possible



Research project: **Segregation in the Netherlands**

- We study how inequality of opportunity and socio-economic outcomes is affected by the extent to which members of different groups tend to interact with peers who have similar characteristics, i.e. segregation.
- We investigate this issue within the three environments in which individuals mostly interact with peers in their everyday life: the neighborhood, the school and the workplace.
- We plan to provide answers to questions such as:
 - How are economic opportunities for children shaped by the neighborhoods in which they grow up?
 - Does this pattern depend on the level of segregation in the area where their family live?
 - How does this relate to the level of segregation in the school they attend?
 - Is the exposure to segregated environments correlated across generations?

Events and seminars



Communities

Community of Practices on Counterfactual Impact Evaluation of European Social Fund initiatives

CoP - CIE - ESF

- The CIE-CoP initiative was launched in 2016 to foster the use of CIE to evaluate the impact of the interventions funded through the European Social Fund, and to create an environment to share experience about CIEs.

- The first CoP meeting has taken place at the JRC in Ispra (9-10 June 2016) counting on the participation of about 50 participants, of which 24 Managing Authorities from 12 Member States.

- The second CoP meeting took place in Riga (LV), on 8-9 June 2017. It was organised in cooperation with the Latvian Ministry of Finance EU-Funds Strategy Department. Representatives from 31 European Social Fund Managing Authorities or evaluation institutes attended.

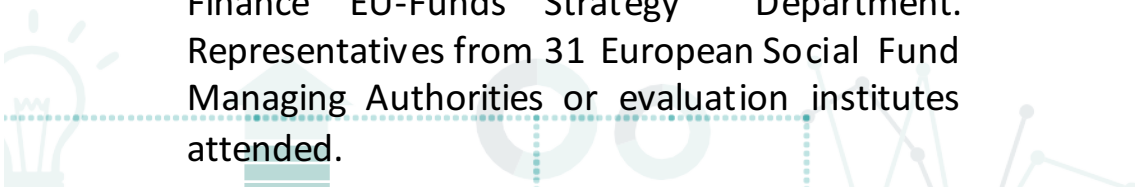
Community of Practice in Data 4 Evaluation

The CoP on 'Data4Evaluation' will contribute to the Data4Policy initiative launched by the European Commission.

The first initiative was organised jointly with the Secretary General in January 2018.

NetCIE

NetCIE is a multilateral Collaboration Agreement, which aims to foster research collaboration between the JRC and several academic and institutional partners in order to contribute more effectively to understanding and resolving scientific issues in the field of CIE of public policies



CC–ME External Seminar Series 2016–2017

Vincenzo Bove - *University of Warwick (UK)*
Jochen Kluge - *Humboldt- Universität zu Berlin (Germany)*
Paolo Naticchioni - *University of Roma Tre (Italy)*
Simone Schuller - *Ifo Center (Germany)*
Lorenzo Rocco - *University of Padova (Italy)*
Florian Mayneris - *Université Catholique de Louvain (Belgium)*
Sasha O. Becker - *University of Warwick (UK)*
Pietro Biroli - *University of Zurich (Switzerland)*
Bart Cockx - *Ghent University (Belgium)*
Thomas Le Barbanchon - *Bocconi University (Italy)*
Fabrizia Mealli - *University of Florence (Italy)*
Enrico Sette - *Bank of Italy*
Daniele Checchi - *National Agency for the Evaluation of Universities and Research Institutes (Italy)*
Alex Bryson - *University College London (UK)*
Steven Stillman - *Free University of Bolzano (Italy)*
Chiara Assunta Ricci - *Ministry of Economy and Finance (Italy)*
Matteo Picchio - *Marche Polytechnic University (Italy) Florence*
Kondylis - *World Bank*
Tommaso Frattini - *University of Milan (Italy)*
Marco Bertoni - *University of Padua (Italy)*
Marco Mariani - *Istituto Regionale Programmazione Economica della Toscana (Italy)*
Marta De Philippis - *Bank of Italy*
Cristina Tealdi - *Heriot-Watt University – Edinburgh (UK)*



Competence Centre on Microeconomic Evaluation (CC-ME)

External Seminar Series | Oct – Dec 2018

This version: 19th September 2018. All titles are provisional. For more information please email us (2018 CC-ME seminar organiser Michele Aquaro, Michele.AQUARO@ec.europa.eu) or visit us at <https://ec.europa.eu/jrc/en/microeconomic-evaluation>.

- 01 October 2018 (Monday)
Martin Huber
University of Fribourg
On the sensitivity of wage gap decompositions
- 09 October 2018 (Tuesday)
Louis Volante
Brock University and Maastricht University
Socioeconomic Inequality and Student Outcomes across the European Union: National Trends, Policies, and Practices
- 11 October 2018 (Thursday)
Joanna Sikora
Australian National University
Aimless or flexible? Does uncertainty in adolescent occupational expectations matter in young adulthood?
- 16 October 2018 (Tuesday)
Marco Nieddu
University of Cagliari
The Effectiveness of Promotion Incentives for Public Employees: Evidence from Italian Academia
- 23 October 2018 (Tuesday)
Fabrizio Mazzonna
Università della Svizzera Italiana (USI)
Self-assessed cognitive abilities and financial wealth: Are people aware of their cognitive decline?
- 30 October 2018 (Tuesday)
Francesca Carta
Bank of Italy
The Effect of a Longer Working Horizon on Individual and Family Labour Supply
- 06 November 2018 (Tuesday)
Roxane Silberman
Centre d'accès sécurisé aux données (CASD)
The International Data Access Network (IDAN) project
- 13 November 2018 (Tuesday)
Emanuele Ciani
Bank of Italy
Machine Learning in the Service of Policy Targeting: The Case of Public Credit Guarantees
- 20 November 2018 (Tuesday)
Paolo Pinotti
Bocconi University
Revealing Stereotypes: Evidence from Immigrants in Schools
- 27 November 2018 (Tuesday)
Alessandro Belmonte
Scuola IMT Alti Studi Lucca
From Italianization to Germanization: Division of Labor, Economic Rents, and Anti-German Attitudes in South Tyrol
- 04 December 2018 (Tuesday)
Laurent Gobillon
Paris School of Economics
The Costs of Agglomeration: House and Land Prices in French Cities
- 12 December 2018 (Wednesday)
Yuya Sasaki
Vanderbilt University
Inference based on Kotlarski's Identity

Publications

Papers in peer-reviewed journals

Battistin, E., Meroni, E., 'Should we increase instruction time in low achieving schools? Evidence from Southern Italy', *Economics of Education Review*, Vol. 55, 2016, pp. 39-56.

Becker, W., Saisana, M., Paruolo, P., Vandecasteele, I., 'Weights and Importance in Composite Indicators: Closing the Gap', *Ecological Indicators*, Vol. 80, 2017, pp. 12-22.

Berta, P., Levaggi, R., Martini, G., Verzillo, S., 'The redistributive effects of copayment in outpatient prescriptions: evidence from Lombardy', *BMC Health Service Research*, Vol. 17, 2017, pp. 336-348.

Boswijk, P. H., Paruolo, P., 'Likelihood ratio tests of restrictions on common-trends loading matrices in I(2) VAR systems', *Econometrics*, Vol. 5, Issue 3, 2017, 1-17.

Bottasso, A., Conti, M., Sulis, G., 'Firm dynamics and employment protection: Evidence from sectoral data', *Labour Economics*, Vol. 48, 2017, pp. 25-53.

Bottasso, A., Bruno, M., Conti, M., Piga, C., 'Competition, vertical relationship and countervailing power in the UK airport industry', forthcoming in *Journal of Regulatory Economics*, 2017.

Bratti, M., Conti, C., 'The effect of immigration on innovation in Italy', forthcoming in *Regional Studies*, 2017.

Bove, V., Elia, L., 'Migration, Diversity and Economic Growth', *World Development*, Vol. 89, 2016, pp. 227-239.



Bove, V., Elia, L., Smith, P., 'On the heterogeneous consequences of civil war', *Oxford Economic Papers*, Vol. 69, Issue 3, 2016, pp.550-568.

Cockx, B., Ghirelli, C., 'Scars of Recessions in a Rigid Labor Market', *Labour Economics*, Vol. 41, 2016, pp. 162-176.

De Sousa Lobo Borges De Araujo, L., Saltelli, A., Schnepf, S., 'Do PISA data justify PISA-based education policy?', *International Journal of Comparative Education and Development*, Vol.19 Issue 1, 2017, pp. 20-34.

Di Porto, E., Elia, L., Tealdi, C., 'Informal Work in a Flexible Labour Market', *Oxford Economic Papers*, Vol.69 Issue 1, 2017, pp. 143-164.

Ferraresi, M., Galmarini, U., Rizzo, L., 'Infrastructure spillovers and strategic interaction: does the size matter?', *International Tax and Public Finance*, 2017.

Franchi, M., Paruolo, P., 'Inverting a matrix function around a singularity via local rank factorization', *SIAM Journal on Matrix Analysis and Applications*, Vol.37 Issue 2, 2016, 774-797.

Guthmuller, S., Wittwer, J., 'The Impact of the Eligibility Threshold of a French Means-Tested Health Insurance Programme on Doctor Visits: A Regression Discontinuity Analysis', *Health Economics*, 2016.

Ghirelli C., Havari E., Santangelo G, M. Scettri: 'On the job training and labour market outcomes. Evidence from an Italian region', *International Journal of Manpower* Forthcoming

Havari, E., Peracchi, F., 'Growing up in wartime: Evidence from World War II', *Economics & Human Biology*, Vol. 25, 2017, pp. 9-32.

Kamanda, M., Madise, N., Schnepf, S., 'Does living in a community with more educated mothers enhance children's school attendance? Evidence from Sierra Leone', *International Journal of Educational Development*, Vol.46, pp. 114-124.

Meroni, E. C., Vera-Toscano, E., 'The persistence of overeducation among recent graduates', *Labour Economics*, Vol. 48, 2017, pp. 120-143.



Morescalchi A., 'The Puzzle of Job Search and Housing Tenure: A Reconciliation of Theory and Empirical Evidence', *Journal of Regional Science*, Vol. 56, No.2, 2016, pp. 288-312.

Mosconi, R., Paruolo, P., 'Identification conditions in simultaneous systems of cointegrating equations of higher order', *Journal of Econometrics*, Vol. 198 Issue 2, 2017, pp. 271 –276.

Schnepf S., 'How do tertiary dropouts fare in the labour market? A comparison between EU countries', *Higher Education Quarterly*, Vol. 71 No.1, 2017, pp. 75-96.

JRC Policy Reports and Working Papers

Bratti, M., Frattini, T., Scervini, F., 'Grandparental Availability for Child Care and Maternal Employment: Pension Reform Evidence from Italy', *JRC Working Papers in Economics and Finance series*, No. 2017/3, 2017.

Crato N., 'A call to action for better data and better policy evaluation. A briefing on the importance of administrative data for social knowledge and policy evaluation at Big Data times', *JRC Science for Policy Report*, No. JRC105479, 2017.

Ghirelli, C., Havari, E., Santangelo, G. and Scettri, M., 'Counterfactual Impact Evaluation of Work Experience for Graduates (WELL)', *JRC Science for Policy Report*, No. JRC106430, 2017.

Bratti M, Ghirelli C, Havari E., Santangelo G, 'Vocational training and labour market outcomes. Evidence from Youth Guarantee in Latvia'

Katay, G., Harasztosi, P., 'Currency Matching and Carry Trade by Non-Financial Corporations', *JRC Working Papers in Economics and Finance*, No. 2017/2, 2017.



Book contributions

Checchi, D., Verzillo, S., 'The role of PISA in regional and private/public debates in Italy', in Volante, L. (ed), *The PISA Effect on Global Educational Governance*, Routledge, London, 2017. Forthcoming.

Schnepf, S., Volante, L., 'PISA and the Future of Global Educational Governance', in Volante, L. (ed), *The PISA Effect on Global Educational Governance*, Routledge, London, 2017. Forthcoming.

Books

Nuno Crato, Paolo Paruolo (eds.), *Data-Driven Policy Impact Evaluation. How Microdata is Transforming Policy Design*, Springer, forthcoming.



Summary

CC-ME Yearbook

